

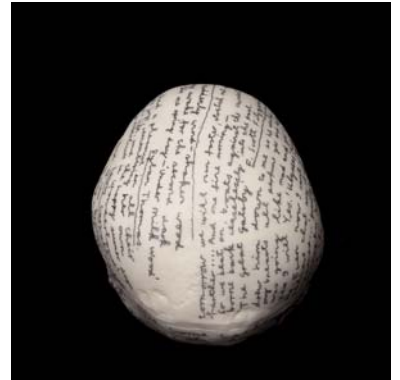
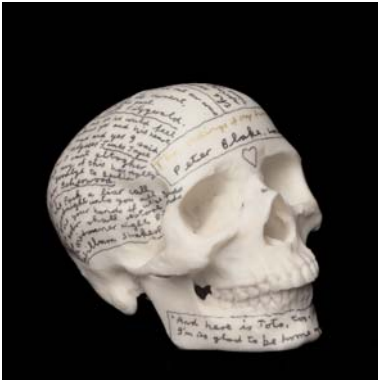


# BONE IDLE

## THE AUCTION WORKS AVAILABLE

### PETER BLAKE

The Endings Of My Favourite Books, 2005  
Pen on plastic skull



### DON BROWN

The Shape Of Things To Come, Edition 1/6, 2005  
Acrylic composite and plastic



## MAT COLLISHAW

Hatchet Job, 2005

Hatchet and plastic skull



## TRACEY EMIN

Little Baby, 2005

Mixed media and plastic skull



## ANGUS FAIRHURST

Reduced In A Circular Formation, 2005

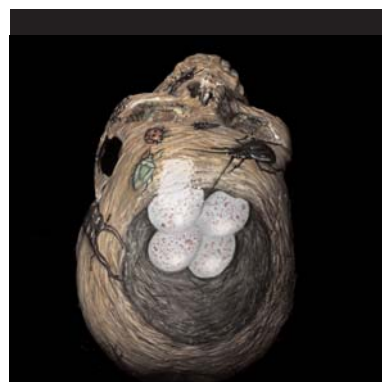
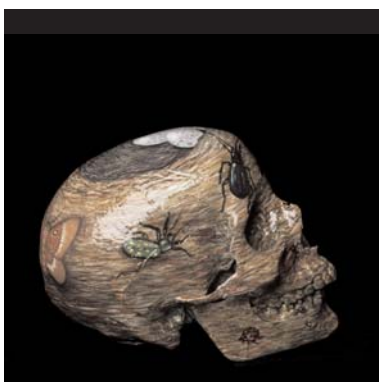
Less than a plastic skull



## DAVID HARRISON

Life After Death, 2005

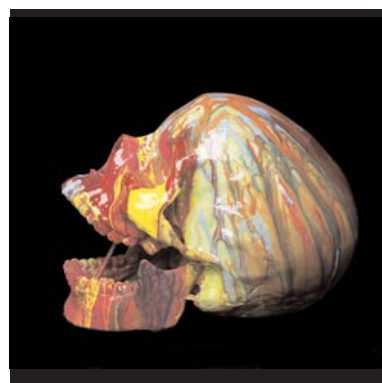
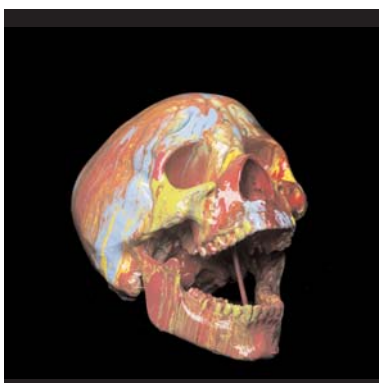
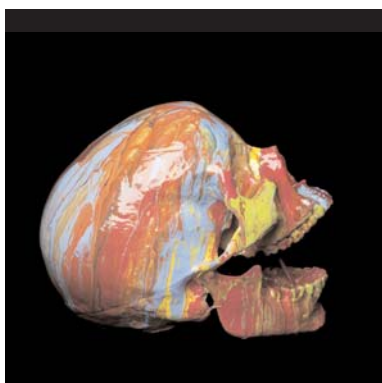
Oil paint and varnish on plastic skull



## DAMIEN HIRST

Spin Skull 5, 2005

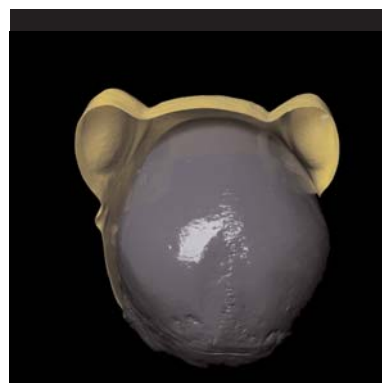
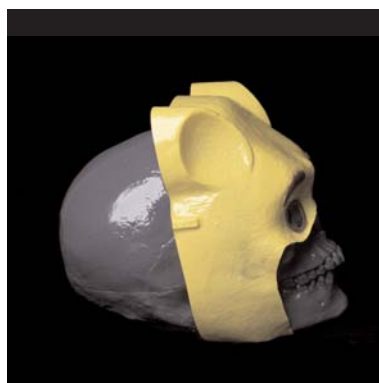
Household paint on plastic skull



## GARY HUME

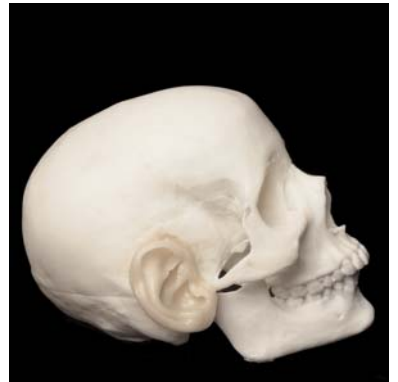
Winnie The Poo, 2005

Household paint on plastic skull and plastic mask



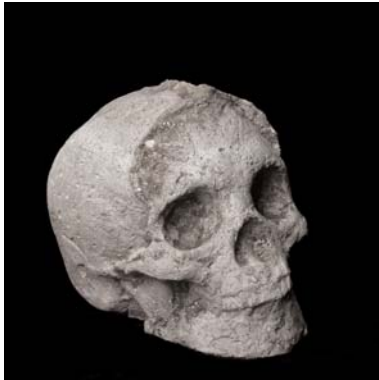
## ABIGAIL LANE

The Last Laugh, 2005  
Wax and plastic skull



## SARAH LUCAS

My Head, 2005  
Concrete



## TIM NOBLE & SUE WEBSTER

Fucking With Death, 2005  
Pencil and paint on plastic skull



## GAVIN TURK

The Skull Of Gentleman Jim, 2005

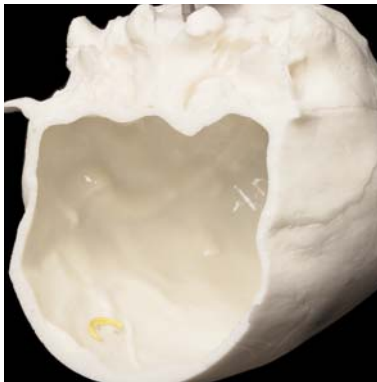
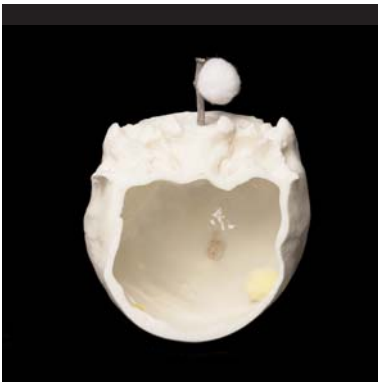
Plastic skull in box with sound equipment



## REBECCA WARREN

The Theatre Of His Genius, 2005

MIxed media and cut plastic skull



ALL SKULLS COME WITH A CERTIFICATE SIGNED BY THE ARTIST. MOST COME IN THE SPECIALLY DESIGNED BOX THAT WAS SENT TO THE ARTISTS WITH THE SKULL. TRACEY EMIN'S WORK INCORPORATES A CARD COFFIN INSTEAD AND MAT COLLISHAW'S HAS A DEAD HEAD CARD BOX.

ALL SKULLS WILL REMAIN IN THE BONE IDLE EXHIBITION UNTIL THE 16TH OF DECEMBER.